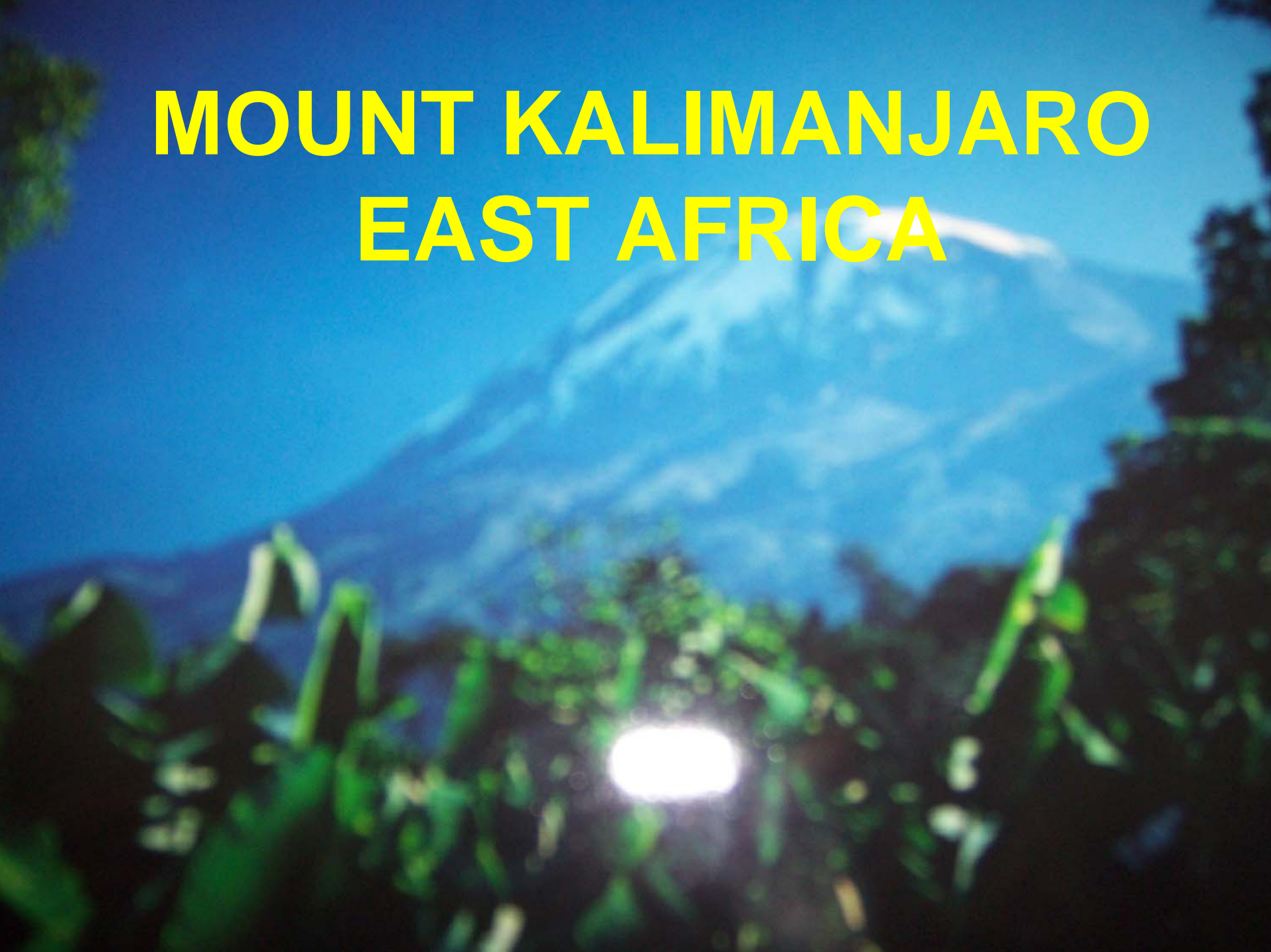


THE ART OF MEDICINE

Beyond Pills and Injections



MOUNT KALIMANJARO EAST AFRICA









Green and Flourishing

Milk from its source – FRESH





In Lion Country...with Masai



Go forth and multiply







Better to light a candle than curse the darkness



HYPROCRATIS

“Life is short, ART (Medicine) is Long.

***The Occasion Fleeting;
experience fallacious,
judgement difficult....”***

THE CHALLENGE

Keep the Art of Medicine in facing challenges of:

- 1) Technological advances
- 2) Business & Economic metamorphosis
- 3) Service quality

SAVING NEMO



- **N**ot just Science of Technology, but art of healing.
- **E**nhancing a continuous learning environment with humility and perseverance.
- **M**onitoring professionalism & ethical practice in a business world.
- **O**n achieving a total holistic care.

“Faster, Better and Cheaper....” War Cry in Health Care

- **Professionalism.....**
- **Ethical Issues.....**



A vibrant rainbow arches across a bright blue sky, its colors reflecting on the surface of a large body of water. In the distance, a city skyline is visible, with buildings and structures silhouetted against the horizon. The overall scene is bright and colorful, with a clear blue sky and a calm sea.

Dream the impossible dream,

**“Idealism” need to be tampered
with reality**

LEWIS THOMAS (1913-1993)
(President, MSK Cancer Centre;
Dean, Medical Schools):

*“Doctoring is NOT training to look
at machines,....”*

**“Return to the caring of
sick people...”**

(Local Experience NUS Lecturer)

LEWIS THOMAS :

- **“We must be master of modern technology and not its slave”**
- **Listening to the 9th Symphony—
Medical Watcher Medusa and
the Snail.**
- **The Lives of a Cell.**



- **Surgeons must be careful when they take the knife.**
- **Underneath the fine incision, stir the culprit called LIFE**



WILLIAM OSLER

*“Practice of
Medicine is an ART
not a Trade,
A calling, not a
business”*



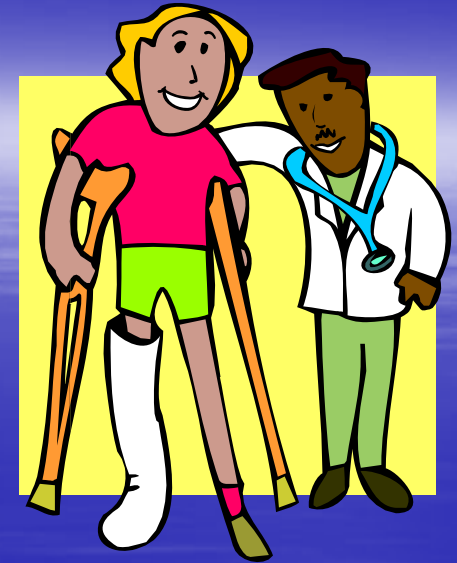
THE CHALLENGE TODAY:

**Keeping
Professionalism
alive in the changing
world of Business**



EXAMPLE

- Rehabilitation Care
- Singapore Medicine
- Block budgeting & mean testing



A cartoon illustration on a blue background. Four stylized human figures are holding a large white banner. The figures are drawn with simple, rounded features and are wearing various colored suits and clothing. The banner is held up by two men at the top and two people at the bottom. The text on the banner is in a bold, blue, sans-serif font.

**'Dehumanization of Patient
Care'**

**Mistake the disease for the
Human Being**

WILLIAM OSLER



- **“Practice of Medicine is an ART based on Science.”**
- **“Understanding Science of Practice, upholding the Art of Healing.”**

TEACHING BY EXAMPLES

*“Walk not in front of me – may lead
me astray*

*Walk not behind me – I may show
you a wrong path*

*Walk with me – we will learn
together”*



PROFESSIONALISM AND ETHICS

- ✂️ **Difficult to quantify**
- ✂️ **Challenging to teach**
- ✂️ **Essential to practise**



PATIENTS' TRUST & HOPE

**“Other Refuge have I none-
Hangs my helpless self on you.
Leave, leave me not alone.
Still support and comfort me.
All my trust on you I stayed.
All my hope from you I long.
Cover my defenseless head, with the
shadow of your wing”**



PHYSICIAN PROFESSIONAL CHARTER

1) Commitment to Patient

- 1) Professional competence
- 2) Quality and Care
- 3) Scientific knowledge (EBM)
- 4) Communication

2) Ethical Commitment to patient

- 1) Honesty with patient
- 2) Confidentiality
- 3) Maintaining trust

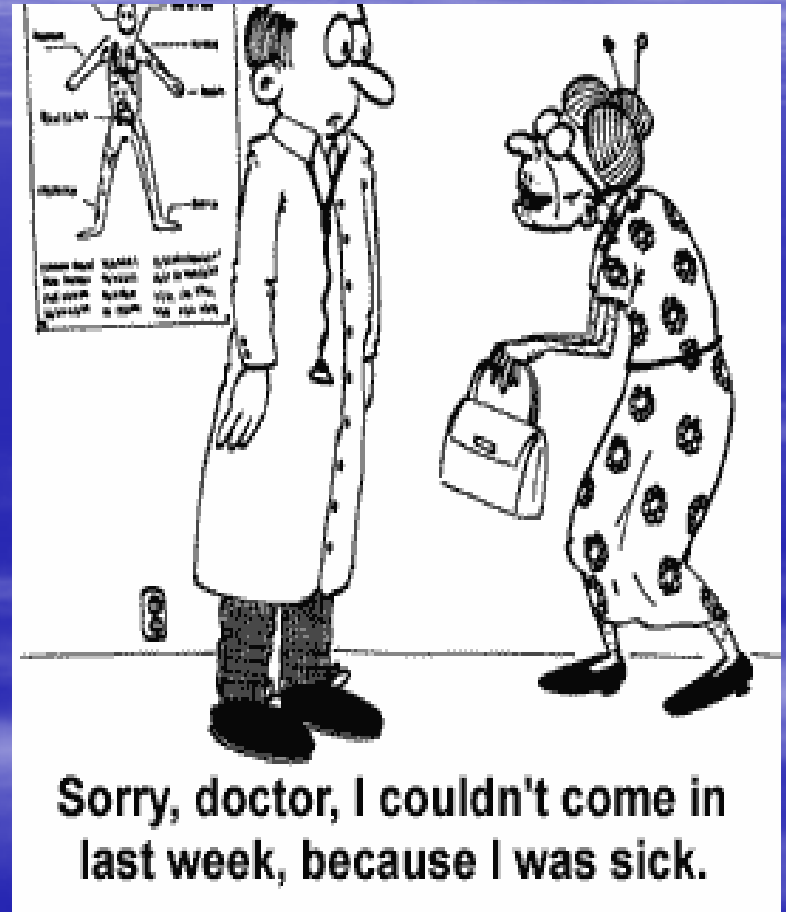
3) Commitment to Society

- 1) Just distribution of finite resources
- 2) Improving access to care



TRANSLATED INTO ACTION

- 1) Skills
- 2) Attitudes
- 3) Honesty; Altruism
- 4) Service to others
- 5) Professional Codes
- 6) Justice
- 7) Respect for others
- 8) Self regulation
- 9) Communication
- 10) Confidentiality



PRACTICISING THE GENTLE ART OF MEDICINE (Towards Total Holistic Care)

Beyond pills & injections

4 'C's

- **Communication Skill**
- **Commitment**
- **Compassion**
- **Common Sense**



COMMITMENT

- ❖ **to our duties**
- ❖ **to our colleagues**
- ❖ **to the Profession**
- ❖ **to CME, CPD, etc... etc...**



SERVICE QUALITY

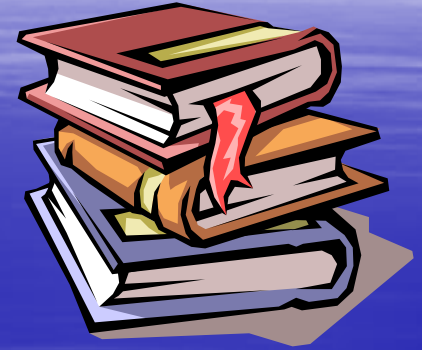
❖ **eg. of Ritz Hotel**



❖ **Ford motors**



LEARNING & TEACHING / RESEARCH



ARISTOTLE:

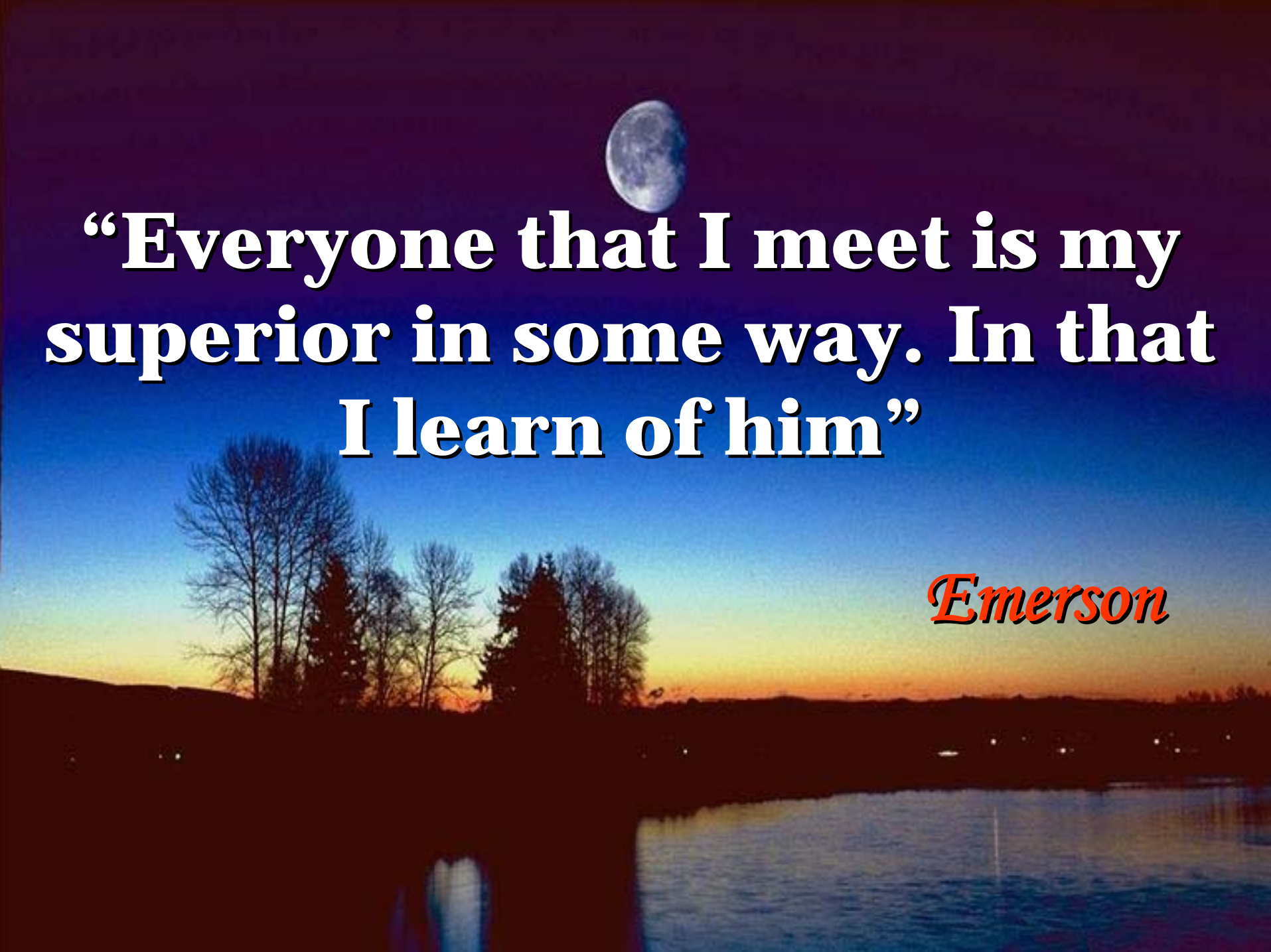
**“The half life of knowledge is
5 to 7 years”**

- learning is a dynamic process

**‘Be more impressed by how
much you have to learn than by
how much you know’**

Prof Claude Organ





**“Everyone that I meet is my
superior in some way. In that
I learn of him”**

Emerson

Humility is a humble pie – eat it
It is palatable



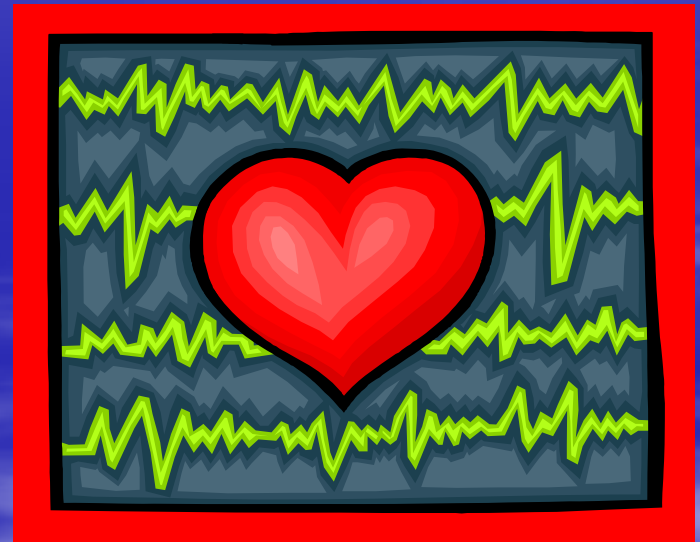
3RD C - COMPASSION

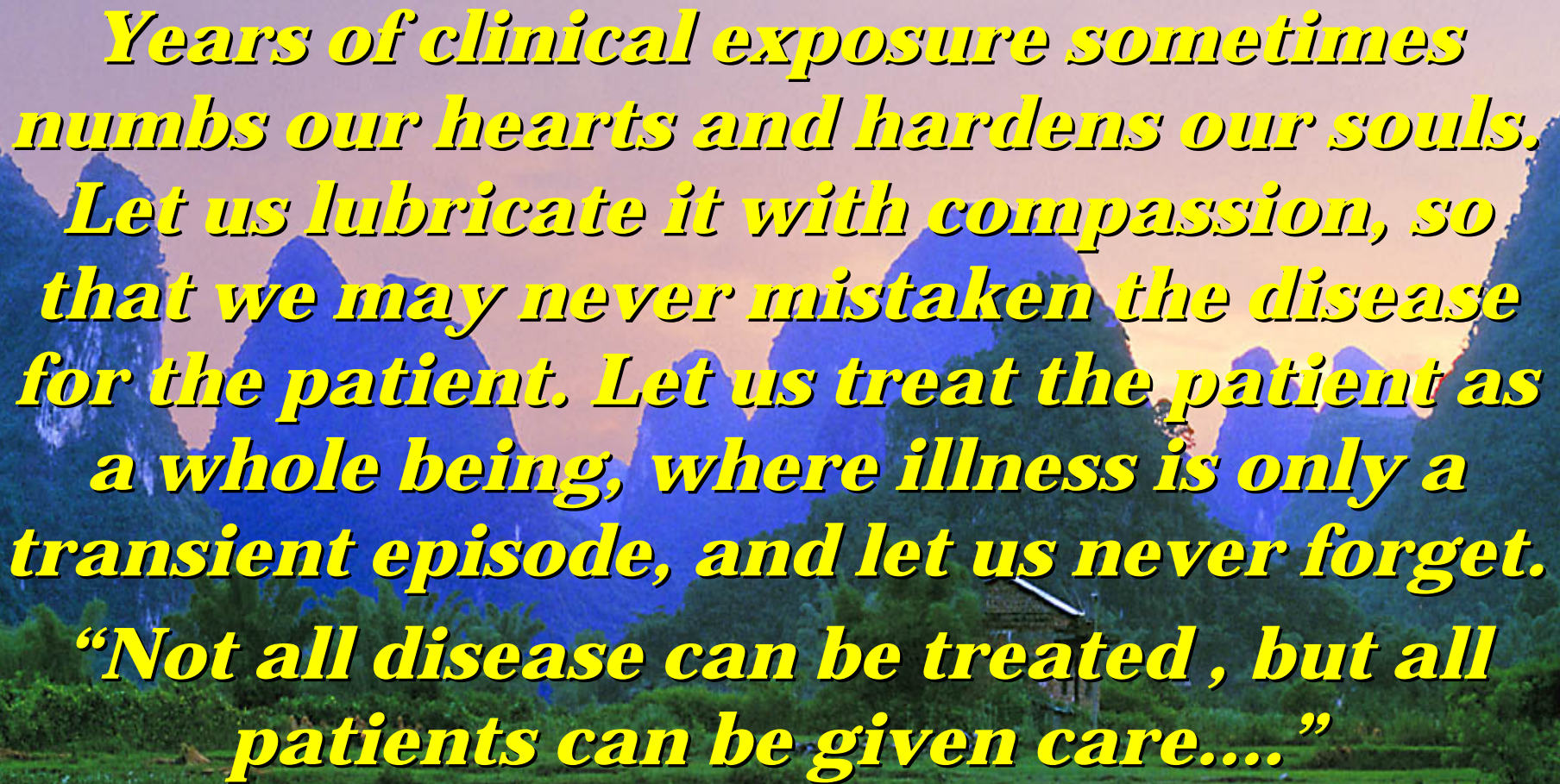
Compassion is a quality that cannot be measured and yet without it, one can never truly be a doctor, nurse or healthcare worker. It is compassion that drives us to take up the noble art of healing. It is compassion that motivates us to serve our fellow human being in pain.

COMPASSION

**It is a matter of the
MYOCARDIUM**

**“ The heart of
Healthcare
Education is the
Education of the
Heart. ”**



A scenic landscape featuring a river with a waterfall in the foreground, lush greenery, and mountains in the background under a sunset sky. The text is overlaid on this image.

Years of clinical exposure sometimes numbs our hearts and hardens our souls. Let us lubricate it with compassion, so that we may never mistaken the disease for the patient. Let us treat the patient as a whole being, where illness is only a transient episode, and let us never forget. “Not all disease can be treated , but all patients can be given care....”

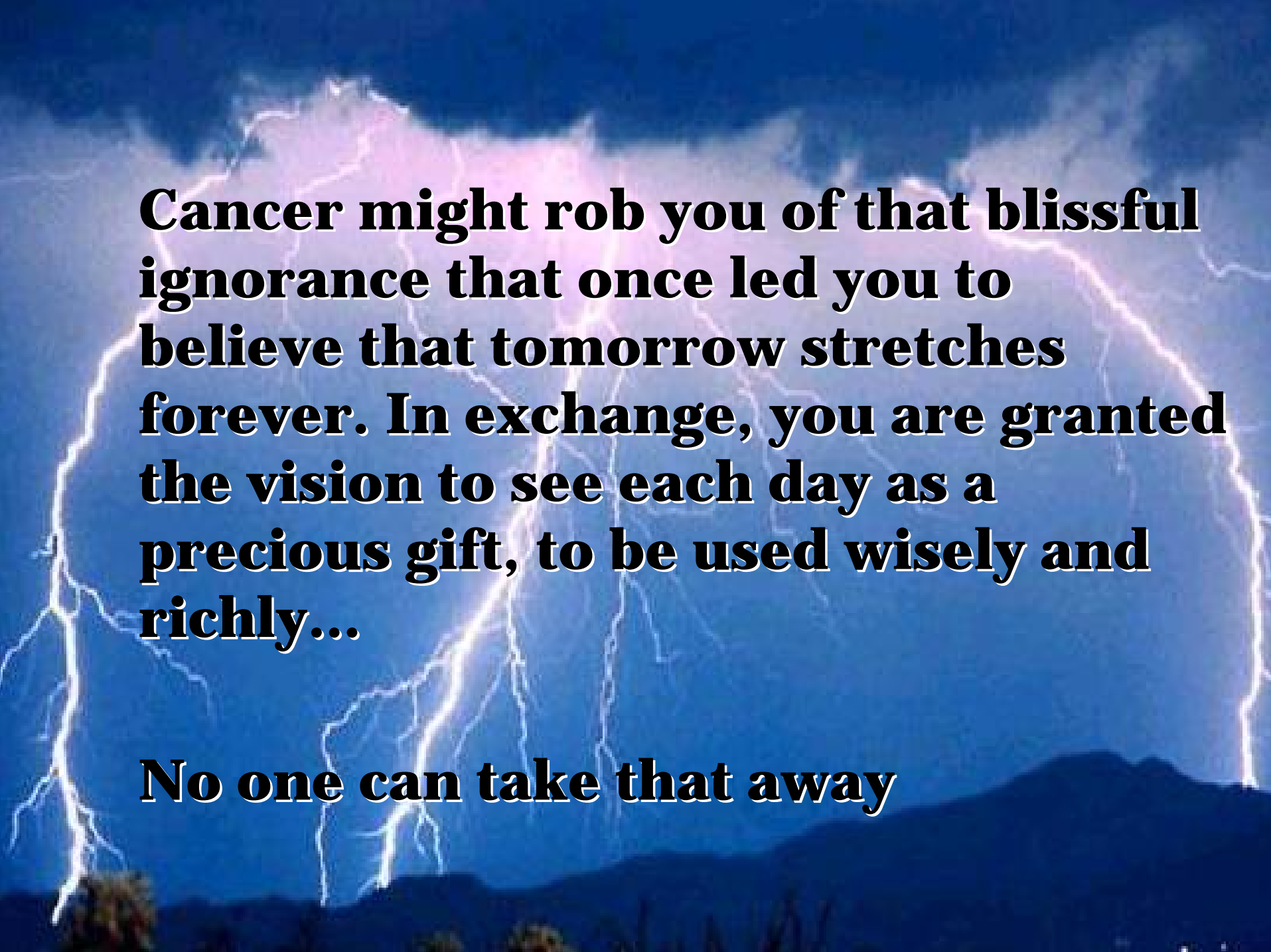
INTELLIGENCE

**makes you a Nurse, a Doctor, a
Healthcare Specialist**

COMPASSION

makes you a Healer





Cancer might rob you of that blissful ignorance that once led you to believe that tomorrow stretches forever. In exchange, you are granted the vision to see each day as a precious gift, to be used wisely and richly...

No one can take that away

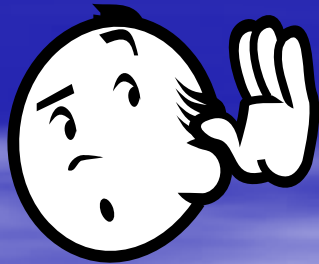
A patient dying of cancer needs above all, someone to listen and understand how he feels. Those who stay away from the patients because they feel they can bring nothing but the lack of understanding should realize that it is our desire to try to understand and not the success in doing so that eases the loneliness that is so hard to bear.

Cicely Saunders

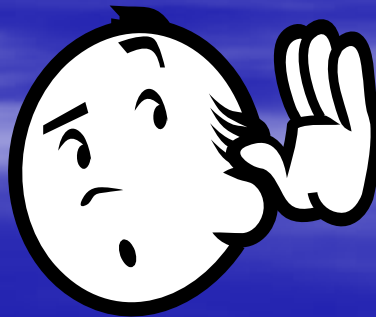
TREAT THE PATIENT AS A HUMAN BEING

Be a listener

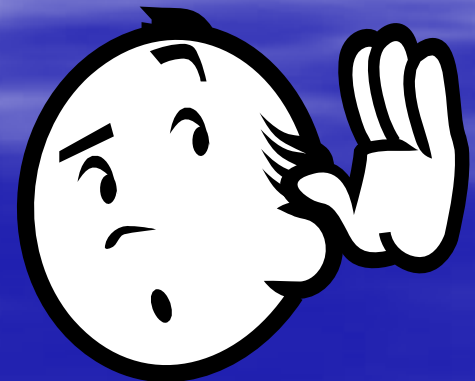
Listen



Listen



Listen



(e.g. Boy with FB, 12 complaints wd)

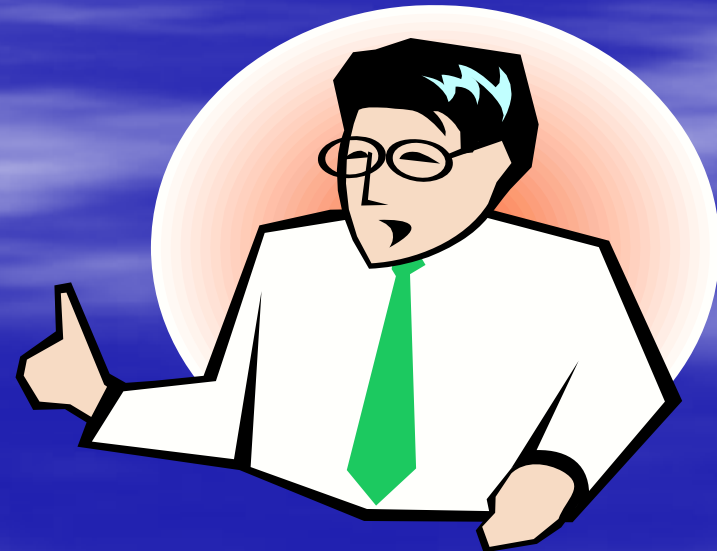
MIND YOUR LANGUAGE

BE HUMBLE, HONEST

Mean what you say

Say what you mean

But don't say it mean



(Patients with colostomy, thyroid)

**WALLS have EARS
and they DO HEAR**

in OT observe decorum



4TH C – COMMON SENSE

**Common Sense is not always
common**



No man is an island...





We are all islands;
Islands of ignorance
Separated by
Seas of misunderstanding

(Sheep vs friendship)

A photograph of a suspension bridge over a wide river. The bridge has white towers and cables. The sky is blue with some clouds. The text is overlaid on the left side of the image.

STONES

*To build
BRIDGES*

not

WALLS

WILLIAM OSLER : 3 IDEALS

- **MY PATIENTS first (Patient Centered Professionalism)**
- **Respect my Professional Brethren**
- **Humble in my achievement.
Value my friends.**

DR WONG H S:



“In search of Modern Day Role Model”

He is the one

“Never say ‘no’ to a patient in need.”

***“A Simple Village Doctor – But a GIANT
in Art of Medicine”***



“ I believe most doctors still believe healthcare in whatever form is a calling dedicated to the service of humanity. It is of vital importance that this attitude be retained and passed on to our successors.”

- Dr Wong H S

ONWARD

with

TAN
TOCK
SENG
HOSPITAL



March 1995

Pioneer in Caring

What Our Patient Says ...

SPARKS' 3rd AGM

Hearing Loss in the Elderly

Spring Festival

TTSH Welcomes

Dr Benjamin Chew

Caring for you since 1844

MODERN DAY LIVING ROLE MODEL

That fatherly smile, the gentle touch

Prof Lim Pin

**“Never too young or too old.
Life begins after 60 ..” and beyond**

Prof Shamugaratnam

BEGINNING OF A JOURNEY

Many rivers to be crossed

Mountains to be climbed

Obstacles to be overcome

**Journey is demanding, challenging and
exciting**



IF YOU EVER FALTER, RISE UP AGAIN

In life

“Not how often you fall

But how quick you stand up again
that determines Success”



A Song Of Love

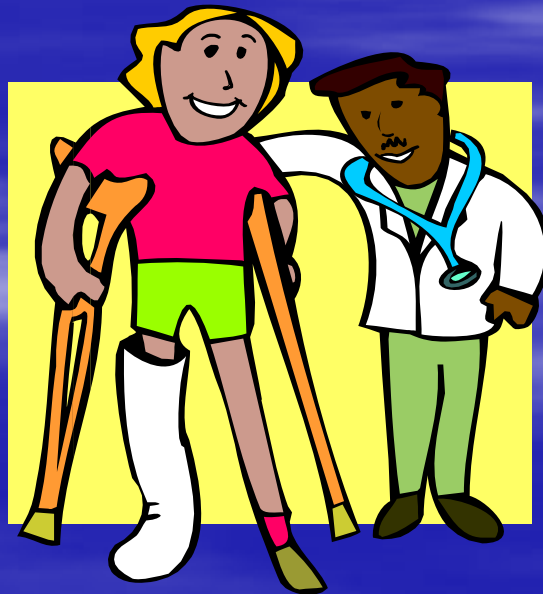


A Song for Eternity

**Yesterday is but a dream
Tomorrow is only a vision
Today well lived
Makes every yesterday a dream of
happiness
And every tomorrow a vision of
hope**



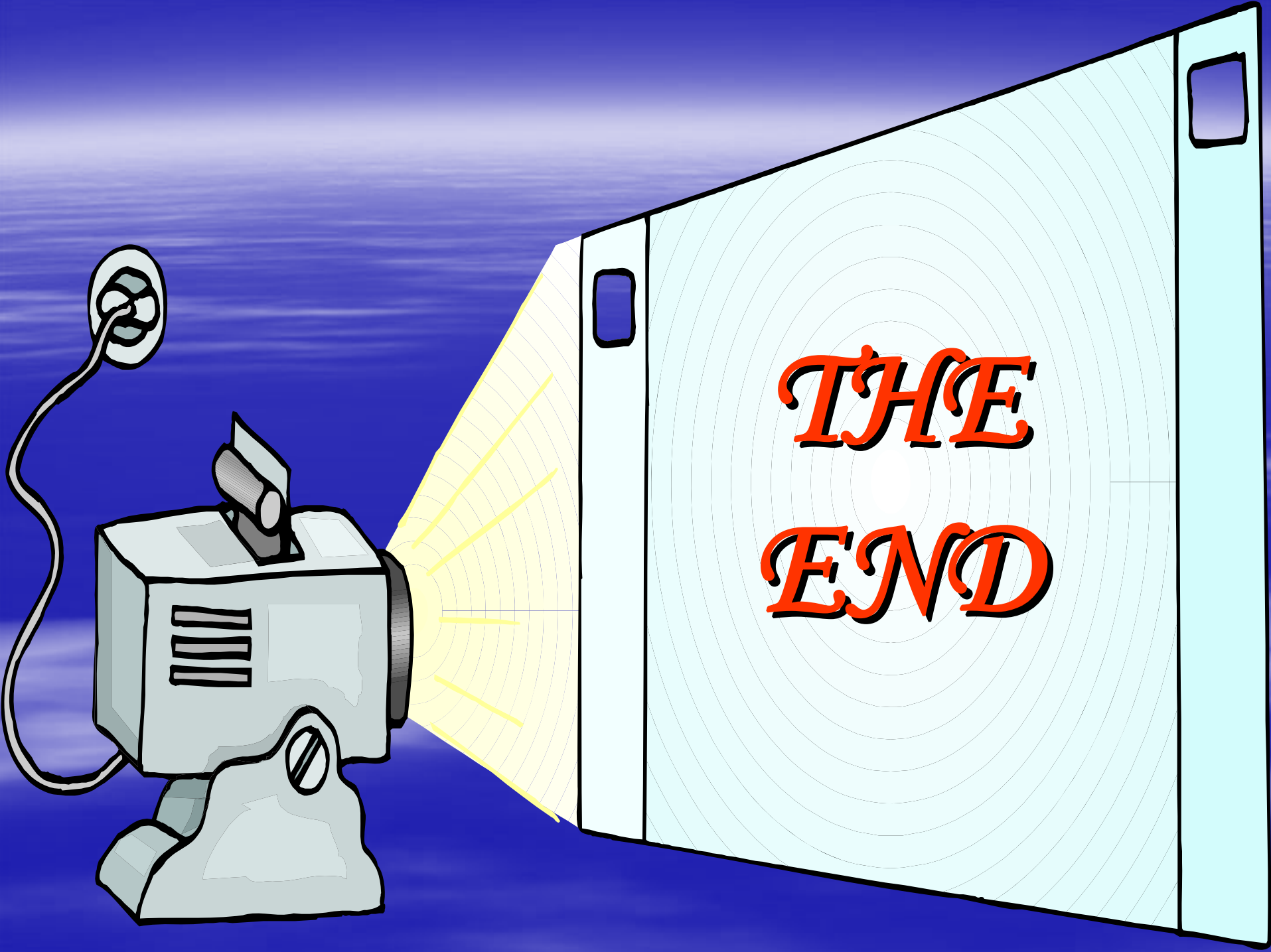
**“Ask, my dear people,
Not what medicine and healthcare
can give us, but what we can do
for our people
– through Healthcare Services”**



So go forth , my friends and serve



**“In the service of medicine
The sky has no limits”**



*THE
END*